

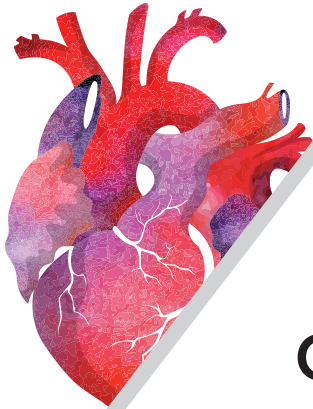
10<sup>th</sup> - 11<sup>th</sup> March, 2017

Thessaloniki Concert Hall  
Thessaloniki, Greece

ORGANIZED BY




FONDAZIONE  
INTERNAZIONALE  
MENARINI



FROM  
**RISK FACTORS**  
TO TARGET  
**ORGAN DAMAGE:**  
*HOW TO DIAGNOSE*  
*HOW TO TREAT*






*There are many risk factors associated with coronary heart disease and stroke. Some risk factors such as family history, ethnicity and age, cannot be changed. Other risk factors that can be treated or changed include tobacco exposure, high blood pressure, high cholesterol, obesity, physical inactivity, diabetes, and unhealthy diets.*

*Hypertension is the single biggest risk factor for stroke, renal failure and heart attacks. Uncontrolled and prolonged elevation of BP can lead to a variety of changes in the myocardial structure, coronary vasculature, and conduction system of the heart. These changes can lead to the development of left ventricular hypertrophy, coronary artery disease, various conduction system diseases, and systolic and diastolic myocardium dysfunction, to complications that manifest clinically as angina or myocardial infarction, cardiac arrhythmias (especially atrial fibrillation), and congestive heart failure. Furthermore, diabetes is an important risk factor for cardiovascular disease and abnormal blood lipid levels increase the risk of heart disease and stroke. The diagnosis and assessment involves clinical evaluation, including identifying significant risk factors and specific cardiac investigations such as echocardiogram, measurement of microalbuminuria, stress testing or coronary imaging. These investigations may be used to confirm the diagnosis, to identify or exclude associated conditions or precipitating factors, assist in stratifying risk associated with the disease and to evaluate the efficacy of treatment. In practice, diagnostic and prognostic assessments are conducted simultaneously, rather than separately, and many of the investigations used for diagnosis also offer prognostic information.*

*The aim of this International Symposium is to update general practitioners and specialists (cardiologists, internists, nephrologists, endocrinologists, neurologists) on the most recent advances in the diagnostic approach, prevention and treatment of the most important risk factors of cardiovascular diseases. During the congress will be discussed important topics such as atrial fibrillation, pulmonary embolism, sexual dysfunction, new risk factors, markers and other hot topics. The scientific sessions will be very interactive, the participants will have the chance to discuss with the experts interesting case studies related to the presented topics, with the aim to discuss with the experts the gold standard of treatment of these diseases and to assess the therapeutic handling of specific diseases, in every day clinical practice.*

*I am delighted to invite you all to participate in this international event where experts and prominent speakers from all over the world will give a great scientific contribution to better understand the different topics.*

Prof. Athanasios J. Manolis  
President of the Meeting



**PRESIDENT OF THE MEETING**  
Prof. Athanasios J. Manolis

**ORGANIZED BY**



FONDAZIONE  
INTERNAZIONALE  
MENARINI

**Fondazione Internazionale Menarini**

Centro Direzionale Milanofiori

20089 Rozzano (Milan, Italy) - Edificio L - Strada 6

Phone: +39 02 55308110 - Fax: +39 02 55305739

E-mail: milan@fondazione-menarini.it - www.fondazione-menarini.it

**ORGANIZING SECRETARIAT**



**AIM Group International - Rome Office**

Via Flaminia, 1068 - 00189 Rome (Italy)

Direct +39 06 33053.1 - Fax +39 06 33053.229

E-mail: symposiumthessaloniki@aimgroup.eu - www.aimgroupinternational.com

**PROVIDER E.C.M.**

**AIM Education - Provider n. 93**

Via G. Ripamonti, 129 - 20141 Milano

Ph. +39 02 56601.1 - Fax +39 02 70048585

cme@aimgroup.eu - www.aimeducation.it

Friday, March 10<sup>th</sup> 2017- Morning

**OPENING CEREMONY**

09.00 a.m. *Welcome addresses*  
**A. J. Manolis** (Athens, GR)  
**A. Garyfallos** (Thessaloniki, GR)  
**A. Casini** (Florence, I)

**SESSION I - Hypertension: Diagnostic Approach and Subclinical Organ Damage**

**Chairpersons:** **D. Lovic** (Nis, SRB)  
**E. Lurbe** (Valencia, ES)  
**J. Brguljan** (Ljubljana, SLO)

09.20 a.m. **A. Pittaras** (Athens, GR)  
*BP measurement: office, home or ABPM?*

09.40 a.m. **K. Narkiewicz** (Gdansk, PL)  
*Subclinical organ damage: diagnostic approach*

10.00 a.m. **A. Coca** (Barcelona, ES)  
*Hypertension and stroke*

10.20 a.m. *COMMENTS - DISCUSSION*  
**A. Hatzitolios** (Thessaloniki, GR)  
**N. Kouremenos** (Athens, GR)  
**V. Katsi** (Athens, GR)

10.40 a.m. Coffee break

*LECTURE*  
**Chairperson:** **S. Erdine** (Istanbul, TR)

10.55 a.m. **G. Ambrosio** (Perugia, I)  
*Uric Acid: risk factor or marker?*

## SESSION II - Hypertension Management

<b>Chairpersons:</b>	<b>M. Viigimaa</b> (Tallinn, EST) <b>P. López-Jaramillo</b> (Bucaramanga, CO) <b>J. Alsaïd</b> (Bahrain, BRN)
11.15 a.m.	<b>K. Tsioufis</b> (Athens, GR) <i>Are all antihypertensive drugs equally effective?</i>
11.35 a.m.	<b>J. Redon</b> (Valencia, ES) <i>Resistant hypertension: which combination?</i>
11.55 a.m.	<b>D. Vlahakos</b> (Athens, GR) <i>How to manage high blood pressure in chronic kidney disease?</i>
12.15 p.m.	COMMENTS - DISCUSSION <b>P. Zebekakis</b> (Thessaloniki, GR) <b>E. Triantafyllidi</b> (Athens, GR)
<b>Chairperson:</b>	<b>A. Casini</b> (Florence, I)
12.35 p.m.	LECTURE <b>A. Kotaridou</b> (Thessaloniki, GR) <i>Alexander the Great</i>
01.00 p.m.	Lunch

Friday, March 10<sup>th</sup> 2017- Afternoon

## SESSION III - Hot Topics in Cardiovascular Disease I

<b>Chairpersons:</b>	<b>I. Kanonidis</b> (Thessaloniki, GR) <b>D. Gaita</b> (Timisoara, RO) <b>P. Stylianou</b> (Nicosia, CY)
02.00 p.m.	<b>D. Vinereanu</b> (Bucharest, RO) <i>Atrial fibrillation: key messages from recently published guidelines</i>
02.20 p.m.	<b>C. Olympios</b> (Athens, GR) <i>Pulmonary embolism: key messages from recently published guidelines</i>
02.40 p.m.	<b>M. Doumas</b> (Thessaloniki, GR) <i>Sexual dysfunction in daily practice</i>

## SESSION IV - Heart Failure

<b>Chairpersons:</b>	<b>J. Zarifis</b> (Thessaloniki, GR) <b>V. Vassilikos</b> (Thessaloniki, GR)
03.00 p.m.	<b>G. Rosano</b> (London, UK) <i>Diagnostic approach</i>
03.20 p.m.	<b>C. Lam</b> (Singapore, SGP) <i>Treatment of acute and chronic heart failure</i>
03.40 p.m.	<b>G. Filippatos</b> (Athens, GR) <i>Key messages from recently published guidelines</i>
04.00 p.m.	COMMENTS - DISCUSSION <b>E. Hamodraka</b> (Athens, GR) <b>G. Karavidas</b> (Athens, GR) <b>D. Papadopoulos</b> (Athens, GR)
04.20 p.m.	Coffee break

## SESSION V - Stable Coronary Heart Disease

<b>Chairpersons:</b>	<b>J. Goudevenos</b> (Ioannina, GR) <b>M. Dorobantu</b> (Bucharest, RO) <b>A. Trikas</b> (Athens, GR)
04.35 p.m.	<b>G. Kolovou</b> (Athens, GR) <i>An update in the treatment of dyslipidemia</i>
04.55 p.m.	<b>L. Poulimenos</b> (Athens, GR) <i>Pathophysiology and diagnostic approach of SCHD</i>
05.15 p.m.	<b>P. Collins</b> (London, UK) <i>SCHD in women and diabetes</i>
05.35 p.m.	COMMENTS - DISCUSSION <b>A. Ziakas</b> (Thessaloniki, GR) <b>C. Grassos</b> (Athens, GR)

## SESSION VI - Do we need new guidelines in SCHD?

<b>Chairpersons:</b>	<b>G. Ambrosio</b> (Perugia, I) <b>G. Rosano</b> (London, UK)
05.55 p.m.	INTRODUCTION: <b>A.J. Manolis</b> (Athens, GR) <i>Medical treatment of SCHD: a new tailored therapeutic approach</i>
06.15 p.m. - 07.00 p.m.	PANELISTS: <b>D. Alexopoulos</b> (Athens, GR) <b>Z. Ghazzal</b> (Beirut, LB) <b>P. Collins</b> (London, UK) <b>G. Ambrosio</b> (Perugia, I) <b>C. Lam</b> (Singapore, SGP)

Saturday, March 11<sup>th</sup> 2017 - Morning

## SESSION VII - Hot Topics in Cardiovascular Disease II

<b>Chairpersons:</b>	<b>P. Vardas</b> (Heraklion, GR) <b>S. Patsilnakos</b> (Athens, GR)
08.30 a.m.	<b>E. Hatziagelaki</b> (Athens, GR) <i>What's new in diabetes and CVD</i>
08.50 a.m.	<b>Z. Ghazzal</b> (Beirut, LB) <i>2017: state of the art approach on DAPT</i>
09.10 a.m.	COMMENTS - DISCUSSION <b>G. Giannakoulas</b> (Thessaloniki, GR) <b>T. Iliopoulos</b> (Athens, GR)

## SESSION VIII - Upcoming hypertension guidelines: Needs and expectations

<b>Chairperson:</b>	<b>J. Redon</b> (Valencia, ES)
09.30 a.m.	INTRODUCTION <b>A. Zanchetti</b> (Milan, I)
10.00 a.m.	PANELISTS <b>J. Redon</b> (Valencia, ES) <b>A. Mitrakou</b> (Athens, GR) <b>M. Doumas</b> (Thessaloniki, GR) <b>E. Lurbe</b> (Valencia, ES) <b>D. Lovic</b> (Nis, SRB) <b>J. Al Said</b> (Bahrain, BRN) <b>A. Coca</b> (Barcelona, ES) <b>D. Quek</b> (Kuala Lumpur, MAL) <b>P. López-Jaramillo</b> (Bucaramanga, CO)
11.00 a.m.	Coffee break

## SESSION IX - Interactive Case Studies

<b>Chairpersons:</b>	<b>C. Olympios</b> (Athens, GR) <b>P. Agathangelou</b> (Nicosia, CY) <b>C. Karvounis</b> (Thessaloniki, GR)
11.15 a.m.	<b>S. Erdine</b> (Istanbul, TR) <i>Resistant hypertension</i>
12.15 p.m.	<b>D. Quek</b> (Kuala Lumpur, MAL) <i>Stable coronary artery disease and diabetes</i>
01.15 p.m.	<b>M. Kallistratos</b> (Athens, GR) <i>Heart failure in an elderly patient</i>
02.15 p.m.	COMMENTS - DISCUSSION <b>M. Papavasiliou</b> (Athens, GR) <b>M. Marketou</b> (Heraklion, GR) <b>V. Kotsis</b> (Thessaloniki, GR)
02.45 p.m.	Closing Remarks

## GENERAL INFORMATION

### MEETING VENUE

Thessaloniki Concert Hall  
25<sup>th</sup> Martiou Str. & Paralia, Thessaloniki 546 46 - Greece

### SECRETARIAT DURING THE MEETING

The Secretariat will be open at the following times:  
Friday, March 10<sup>th</sup>, from 08.00 a.m. to 07.00 p.m.  
Saturday, March 11<sup>th</sup>, from 07.30 a.m. to 02.45 p.m.

### OFFICIAL LANGUAGE

The official language of the Meeting will be English.

### ITALIAN CME CREDITS (for Italian participants only)

L'evento **From risk factors to target organ damage: how to diagnose, how to treat** è stato accreditato presso la Commissione Nazionale per la Formazione Continua con **Obiettivo Formativo di PROCESSO: DOCUMENTAZIONE CLINICA. PERCORSI CLINICO-ASSISTENZIALI DIAGNOSTICI E RIABILITATIVI, PROFILI DI ASSISTENZA - PROFILI DI CURA (3)** per la Figura Professionale del Medico Chirurgo con specializzazione nelle seguenti discipline: Angiologia; Cardiologia; Dermatologia e Venereologia; Ematologia; Gastroenterologia; Geriatria; Malattie Metaboliche e Diabetologia; Medicina Fisica e Riabilitazione; Nefrologia; Oncologia; Pediatria; Reumatologia; Cardiochirurgia; Chirurgia Generale; Ginecologia e Ostetricia; Anatomia Patologica; Anestesia e Rianimazione; Laboratorio di Genetica Medica; Patologia Clinica (Laboratorio di Analisi Chimico-Cliniche e Microbiologia); Igiene, Epidemiologia e Sanità Pubblica; Medicina Generale (Medici di Famiglia); Pediatria (Pediatri di Libera Scelta); Organizzazione dei Servizi Sanitari di Base; Endocrinologia; Genetica Medica; Malattie Infettive; Medicina e Chirurgia di Accettazione e di Urgenza; Medicina Interna; Medicina dello Sport; Neonatologia; Chirurgia Pediatrica; Chirurgia Toracica; Chirurgia Vascolare; Ortopedia e Traumatologia; Urologia; Farmacologia e Tossicologia Clinica; Medicina Trasfusionale; Medicina Legale; per un numero massimo di n. 250 partecipanti.

Oltre tale numero e per professioni/discipline differenti da quelle accreditate non sarà possibile rilasciare i crediti formativi.

Si precisa che i crediti verranno erogati a fronte di una presenza documentata ad almeno il 90% della durata.

**ID ECM: 93-181076 ED.1 - IN ATTESA DI ASSEGNAZIONE CREDITI**

## UEMS/EACCME Accreditation:



The 'FROM RISK FACTORS TO TARGET ORGAN DAMAGE: HOW TO DIAGNOSE, HOW TO TREAT' is accredited by the European Accreditation Council for Continuing Medical Education (EACCME) to provide the following CME activity for medical specialists.

The EACCME is an institution of the European Union of Medical Specialists (UEMS), [www.uems.net](http://www.uems.net).

»The 'FROM RISK FACTORS TO TARGET ORGAN DAMAGE: HOW TO DIAGNOSE, HOW TO TREAT' is designated for a maximum of (or 'for up to') 9 hours of European external CME credits. Each medical specialist should claim only those hours of credit that he/she actually spent in the educational activity.

»Through an agreement between the European Union of Medical Specialists and the American Medical Association, physicians may convert EACCME credits to an equivalent number of AMA PRA Category 1 Credits™. Information on the process to convert EACCME credit to AMA credit can be found at [www.ama-assn.org/go/internationalcme](http://www.ama-assn.org/go/internationalcme).

»Live educational activities, occurring outside of Canada, recognized by the UEMS-EACCME for ECMEC credits are deemed to be Accredited Group Learning Activities (Section 1) as defined by the Maintenance of Certification Program of The Royal College of Physicians and Surgeons of Canada.

## REGISTRATION

Registration to the Meeting will be complimentary.

## TECHNICAL FACILITIES

Facilities will be available for computer presentations and overhead projections. A slide center with PC (Powerpoint for Windows) will be available for check and preview of presentations. It is essential that speakers take their presentations to the slide center at least one hour before the session starts.

The slide center will be open at the following times:

Friday, March 10<sup>th</sup>, from 8.00 a.m. to 7.00 p.m.

Saturday, March 11<sup>th</sup>, from 7.30 a.m. to 2.45 p.m.

## WELCOME RECEPTION

On March 10<sup>th</sup>, a welcome reception will be held at the Meeting Venue at 7.00 p.m.

## LUNCHEAS AND COFFEE BREAKS

Lunches and coffee breaks will be served at the Meeting Venue.

## ABSTRACTS BOOK AND CERTIFICATE OF ATTENDANCE

Participants will receive the Abstract book and the certificate of attendance at the Registration Desk.

## FACULTY

### AGATHANGELOU Petros

St. George's School of Medicine, Nicosia, Cyprus

### ALEXOPOULOS Dimitrios

University of Patras, Patras, Greece

### ALSAID Jafar

Bahrain Specialist Hospital, Bahrain, Bahrain

### AMBROSIO Giuseppe

Division of Cardiology, University of Perugia School of Medicine, Perugia, Italy

### BRGULJAN Jana

University Medical Centre Ljubljana, Ljubljana, Slovenia

### CASINI Alessandro

Fondazione Internazionale Menarini, Florence, Italy

### COCA Antonio

Hypertension and Vascular Risk Unit. Department of Internal Medicine. Hospital Clinic (IDIBAPS), University of Barcelona, Barcelona, Spain

### COLLINS Peter

Royal Brompton Hospital - Imperial College London, London, United Kingdom

### DOROBANTU Maria

Carol Davila University, Bucharest, Romania

### DOUMAS Michael

Aristotle University, Thessaloniki, Greece  
George Washington University, Washington, DC-USA

### ERDINE Serap

Hypertension Center, Marmara University Medical School, Istanbul, Turkey

### FILIPPATOS Gerasimos

Athens University Hospital, Athens, Greece

### GAITA Dan

University of Medicine & Pharmacy "Victor Babes", Timisoara, Romania

### GARYFALLOS Alexandros-Anastasios

Aristotle University of Thessaloniki, Thessaloniki, Greece

### GHAZZAL Ziyad

American University of Beirut, Beirut, Lebanon

### GIANNAKOULAS George

Aristotle University of Thessaloniki, Thessaloniki, Greece

### GOUDEVENOS John

Ioannina University Hospital, Ioannina, Greece

### GRASSOS Charalampos

General Hospital of Attica KAT, Athens, Greece

### HAMODRAKA Eftihia

"Asklepeion" General Hospital, Athens, Greece

### HATZIAGELAKI Erifili

2nd Dept. of Internal Medicine, Research Institute & Diabetes Center, University Hospital "ATTIKON", Medical School of National and Kapodistrian University of Athens, Athens, Greece

### HATZITOLIOS Apostolos

Aristotle University of Thessaloniki, Thessaloniki, Greece

### ILIOPOULOS Themistoklis

General Airforce Hospital, Athens, Greece

### KALLISTRATOS Manolis

"Asklepeion" General Hospital, Athens, Greece

### KANONIDIS Ioannis

Aristotle University of Thessaloniki, Thessaloniki, Greece

### KARAVIDAS Apostolos

Aristotle University of Thessaloniki, Thessaloniki, Greece

### KARVOUNIS Charalampos

Aristotle University of Thessaloniki, Thessaloniki, Greece

### KATSI Vasiliki

Hippokration Hospital, Athens, Greece

### KOLOVOU Genovefa D.

Onassis Cardiac Surgery Center, Athens, Greece

### KOSTANTINIDES Stavros

Democritus University of Thrace, Xanti, Greece

### KOTARIDOU Ageliki

Archaeological Museum of Vergina, Thessaloniki, Greece

### KOTSIS Vasilios

Aristotle University Thessaloniki, Thessaloniki, Greece

### KOUREMENOS Nikos

Private Medical Clinic, Athens, Greece

### LAM Carolyn

National Heart Centre, Singapore, Singapore



## FACULTY

**LÓPEZ-JARAMILLO Patricio**

Cardiovascular Foundation of Colombia, Bucaramanga, Colombia

**LOVIC Dragan**

Hypertensive Centre, Nis, Serbia

**LURBE Empar**

General Hospital, University of Valencia, Valencia, Spain

**MANOLIS Athanasios J.**

"Asklepeion" General Hospital, Athens, Greece

**MARKETOU Maria**

Heraklion University Hospital, Heraklion, Greece

**MITRAKOU Asimina**

University of Athens, Athens, Greece

**NARKIEWICZ Krzysztof**

Department of Hypertension and Diabetology, Medical University of Gdańsk, Gdańsk, Poland

**OLYMPIOS Christophoros**

Department of Cardiology, Thriassio Gen. Hospital, Elefsis, Greece

**PAPADOPOULOS Dimitrios**

University Laiko Hospital, Athens, Greece

**PAPAVASILIOU Maria**

Sismanoglion General Hospital, Athens, Greece

**PATSILINAKOS Sotirios**

Constantopoulion General Hospital of Nea Ionia, Athens, Greece

**PITTARAS Andreas**

Mediton Medical Center, Athens, Greece

**POULIMENOS Leonidas**

Asklepeion" General Hospital, Athens, Greece

**QUEK David**

Pantai Hospital Kuala Lumpur, Kuala Lumpur, Malaysia

**REDON Josep**

University of Valencia, Valencia, Spain

**ROSANO Giuseppe**

St George's University Medical School, London, United Kingdom

**STYLIANOU Philippos**

Nicosia General Hospital, Nicosia, Cyprus

**TRIANTAFYLLIDI Helen**

Attikon University Hospital, Athens, Greece

**TRIKAS Athanasios**

General Hospital "ELPIS", Athens, Greece

**TSIOUFIS Konstantinos**

Hippokration Hospital, Athens, Greece

**VARDAS Panos**

University of Crete, Heraklion, Greece

**VASSILIKOS Vasilios**

Aristotle University Thessaloniki, Thessaloniki, Greece

**VIIGIMAA Margus**

North Estonia Medical Centre, Tallinn University of Technology, Tallin, Estonia

**VINEREANU Dragos**

University of Medicine and Pharmacy Carol Davila - Bucharest, Romania

**VLAHAKOS Demetrios**

2nd Department of Medicine - ATTIKON University Hospital - Athens, Greece

**ZANCHETTI Alberto**

Istituto Auxologico Italiano, Milan, Italy

**ZARIFIS John**

Istituto Auxologico Italiano, Milan, Italy

**ZEBEKAKIS Pantelis**

Aristotle University Thessaloniki, Thessaloniki, Greece

**ZIAKAS Antonios**

University General Hospital of Thessaloniki AHEPA, Thessaloniki, Greece



*Fondazione Internazionale Menarini  
Symposia n: 323*

