

FROM  
**SCIENTIFIC  
RESEARCH**  
TO  
**CLINICAL  
PRACTICE**

January  
19<sup>th</sup> - 21<sup>st</sup>

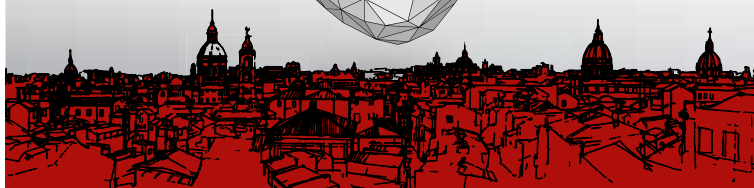
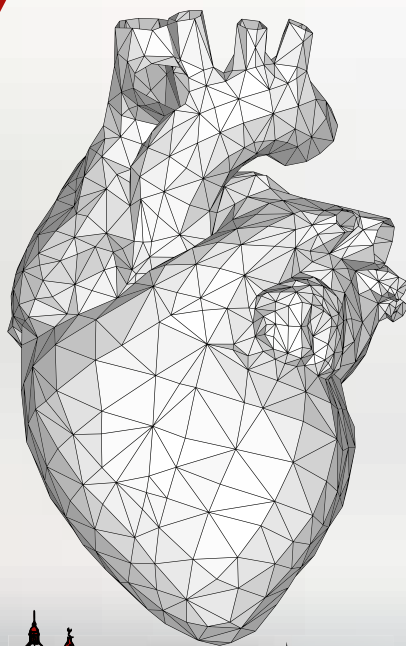
20  
17

Palermo (Italy)

PROMOTED BY:



FONDAZIONE  
INTERNAZIONALE  
MENARINI



**Organized by:**  
Department of Science for Promoting Health (ROSAMI)  
*University of Palermo*

**Course Director**  
*Salvatore Novo*  
Department of Science for Promoting Health (ROSAMI)  
*University of Palermo*



**Session I**

New Insights in Cardiomyopathies

**Session II**

Advances in Heart Failure

**Session III**

Atrial Fibrillation: Know How

**Session IV**

The Added Value of Strain in Echocardiography

**Session V**

Diagnosis of Cardiac Toxicity Due to Antineoplastic Drugs

**Session VI**

Cardiometabolic Risk and Cardiovascular Events

**Organizing Secretariat and Provider:**

**COLLAGE**

S.p.A.

Head Office Palermo

Via U. Giordano n°37 -90144 Palermo

Tel. 091 6867401 - Fax 091 9889354

E-mail: [giusy.ventura@collage-spa.it](mailto:giusy.ventura@collage-spa.it)

Web: [www.collage-spa.it](http://www.collage-spa.it)

**Promoted by:**

**Fondazione Internazionale Menarini**

Centro Direzionale Milanofiori

20089 Rozzano (Milan, Italy) - Edificio L – Strada 6

Phone: +39 02 55308110 - Fax: +39 02 55305739

E-mail: [milan@fondazione-menarini.it](mailto:milan@fondazione-menarini.it)

website: [www.fondazione-menarini.it](http://www.fondazione-menarini.it)